

TECHNICAL RIDER

The Consolation Prize (8+)

SETUP TIME	6 hours
GET IN ON PERFORMANCE DAYS	2,5 prior to start show
TAKE DOWN	1,5 hour
OPENING DOORS BEFORE SHOW	In cooperation with de Stilte
SHOW DURATION	55 minutes
FLOOR THEATRE	Sprung wooden floor covered with black marley
FLOOR COMPANY	We bring a white marley floor, placed on top of the theatres
MINIMAL SIZE OF STAGE	10x10 meters
MASKING	Standard plan (details below)
SIDESTAGE	A space of minimal one meter on each side
MINIMAL HEIGHT OF THE STAGE	5 meters
GRAND PIANO (WHITE)	Brought by company (<u>if</u> possible). Tuned by theatre
TEMPERATURE ON STAGE	Minimal 20 gr. C
TECHNICIANS de Stilte	Two persons
TECHNICIANS THEATRE	Minimal two persons

Lights:

We like to make use of the theatre's fixtures, see attached plan. We will bring our own lighting desk.

Sound:

We like to use the theatre's Front of house system, plus a monitor in the left and right manteaux. We bring our own sound desk, cables to the stage block, monitors on stage and the necessary microphones.

The show contains live music on bass, violin, piano and singing.

Video:

We bring two projectors, one will be rigged above stage and the other will be placed on the front end of the stage on the right side (stage left). We will project on a screen (6,2x4meter) which we bring ourselves and which is placed upstage and a wooden block in the front. Signal goes over BNC from the front of house.

Stage:

We bring our own white marley floor which will be placed on top of the theatres black marley floor (if the opening of the stage is 10 meters or less then the theatre floor isn't needed)

The masking can be the standard plan of the theatre, apart from the black back curtain. This we only need on stage left, starting from 1 meter out of the center.

The rest of the decor consist of 9 wooden white blocks.

Grand piano:

We bring our own white Yamaha C2, on the condition that we can travel by car. We kindly ask the theatre to arrange tuning (440Hz). If this isn't possible we must know at the earliest convenience.

Company:

The company tours with the following members; four dancers, 3 musicians, 2 technicians and one host.

On show days we like to enter the theatre 2,5 hours prior to show, for sufficient warm up.

We like to make use of minimal two heated dressing rooms, complete with showers and towels provided.

Contact

When in doubt or with additional questions, please don't hesitate to contact us. You can reach us during office hours and ask for Yannick de Regt.

T: +31 76 5138125

E: techniek@destilte.nl



Light Plot

De Troostprijs

Venue:




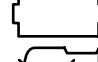

Dance company De Stilte

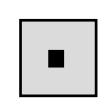
Designer:

Pink Steenvoorde / Einstein Design

11/03/2022

Legenda / Caption

-  PC 2kW
-  PAR64 CP62 1kW
-  Profiel 2kW
-  Horizon (volledig)
-  1kW Profiel (min. 30 graden) op vloerstatief (shin)

-  Vloerplaat projectiescherm

Filters

- n/c = No Colour, 3x LEE 201
- 9x LEE 201, 6x LEE 201
- 6x LEE 201
- LEE 106, LEE 195 & LEE 201

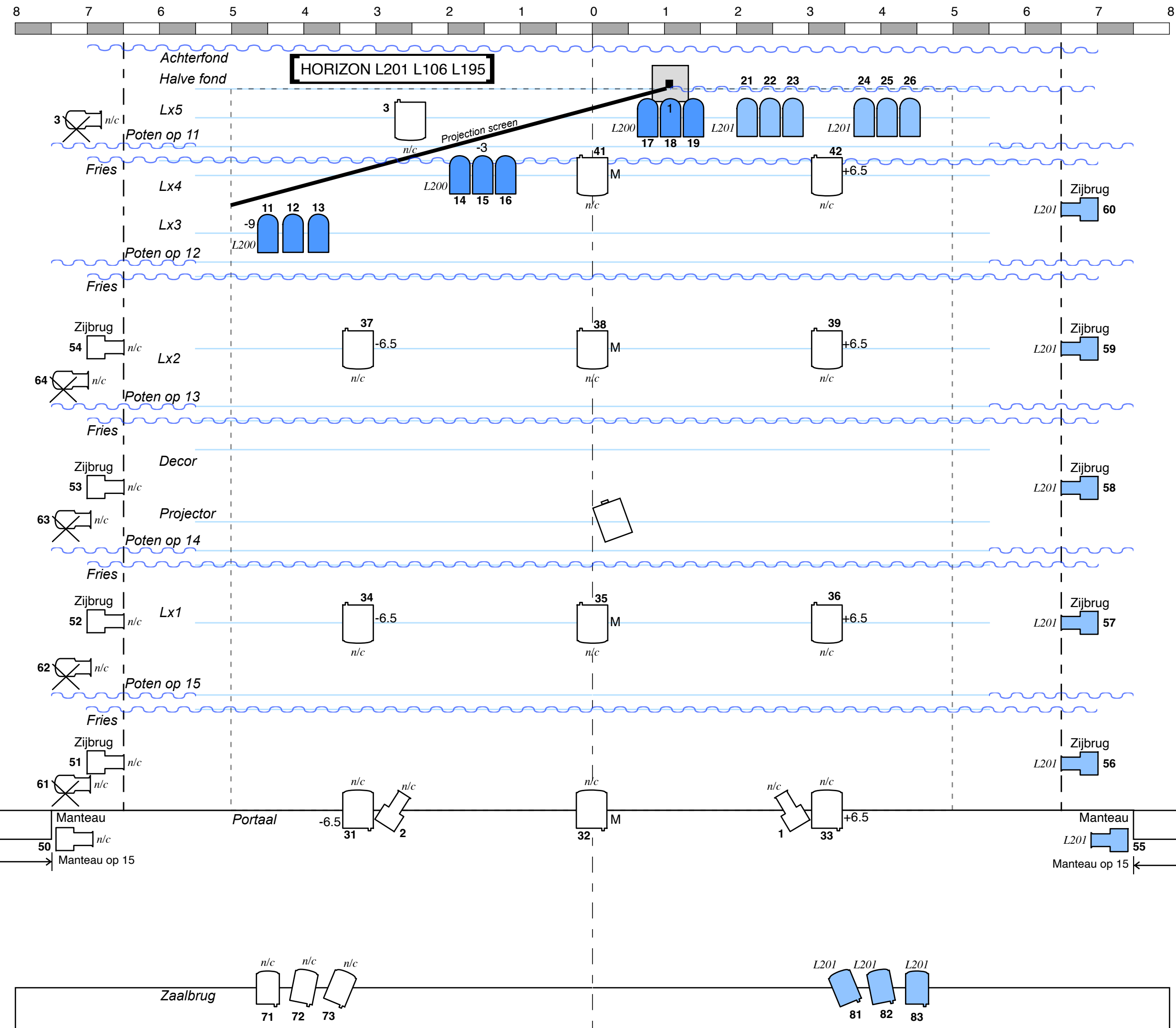


dans voor kinderen

Contact :

techniek@destilte.nl

Tel: +31765138125



91 Horizon L106
 92 Horizon L195
 93 Horizon L201

**ZAALLICHT
 WERKLIJCHT
 AANVANG**